



Hosted by Lydia Missaelides

September 1, 2021
10:30 am - 12:00 pm

Where Do We Go From Here?
Understanding the Changing
Safety Landscape



Made possible by a grant from
Archstone Foundation



Webinar Tips



The meeting is being recorded



"Listen only" mode is on



Handouts are accessible using the Handouts Tab



Submit all questions using Q&A feature



"Chat" and "Hand Raise" features are off



Please complete survey at the end of webinar

August 18, 2021 Webtalk Evaluation: 4.7/5

1. Great webtalk, as usual.
2. Thanks for the informative session!
3. Excellent as always. Having a public health infectious disease expert was extremely helpful.
4. Great resource, as always.
5. Always very practical and helpful!!
6. Dr. was great! She has a natural way of explaining items that make them become clearer (ie mandatory vaccinations) The way she covered the history and going back to 1905 made me rethink my position and realize that maybe mandatory isn't so bad.
7. Thank you for an excellent webinar. We received plenty of guidance that we can implement in our setting.
8. Exceptional WebTalk!
8. Again, another excellent presentation! Great learning experience from the CDPH Medical Officer, Dr. Jane Siegel.
9. As always, very informative information to reflect and use overall for everyone in both ADHC/Health settings and well and personally. Thank you, Lydia and CAADS staff for these wonderful webinars.
10. I really enjoyed Dr. Siegel. Hope she is able to present at a future webinar.
10. Glad to have Dr, Siegel on today to clarify questions
11. Thank you for your guidance and support during these challenging times! Best wishes!
12. Webinars are very helpful and provide important information concerning rapid changes during this difficult time.

Agenda

- 1) CDA Update – ACL 21-10
- 2) COVID and Vaccine Update
- 3) Panel Discussion: Responding to the Changing Landscape
- 4) Resources & Calendar
- 5) Thought for the Week

Presenters

Jill Sparrow, MSW, Chief, Field Operations, CBAS Bureau

Lena Haroutunian, MSW, Program Director, New Sunrise ADHC, Northridge

Richard Lee, Program Director, Beverly ADHC, Los Angeles

Lois Sones, LCSW, Elderday, Santa Cruz

Stephanie Wilson, Program Director, Triple R Adult Day Program, Sacramento

CDA Review of ACL 21-10

Jill Sparrow, Chief, Field Operations, CBAS Bureau

STATE OF CALIFORNIA - HEALTH AND HUMAN SERVICES AGENCY

GAVIN NEWSOM Governor

CALIFORNIA DEPARTMENT OF AGING
Community-Based Adult Services Branch
1300 National Drive, Suite 200
Sacramento, CA 95834
www.aging.ca.gov
TEL 916-419-7545
FAX 916-928-2507
TTY1-800-735-2929



ACL 21-10

Date: August 31, 2021
To: Adult Day Health Care (ADHC) / Community-Based Adult Services (CBAS)
Center Administrators and Program Directors
From: California Department of Aging (CDA) CBAS Bureau
Subject: Postponement of Deadline for CBAS Transition of All Participants to In-Center Services and Other Planning Updates

COVID-19 Updates



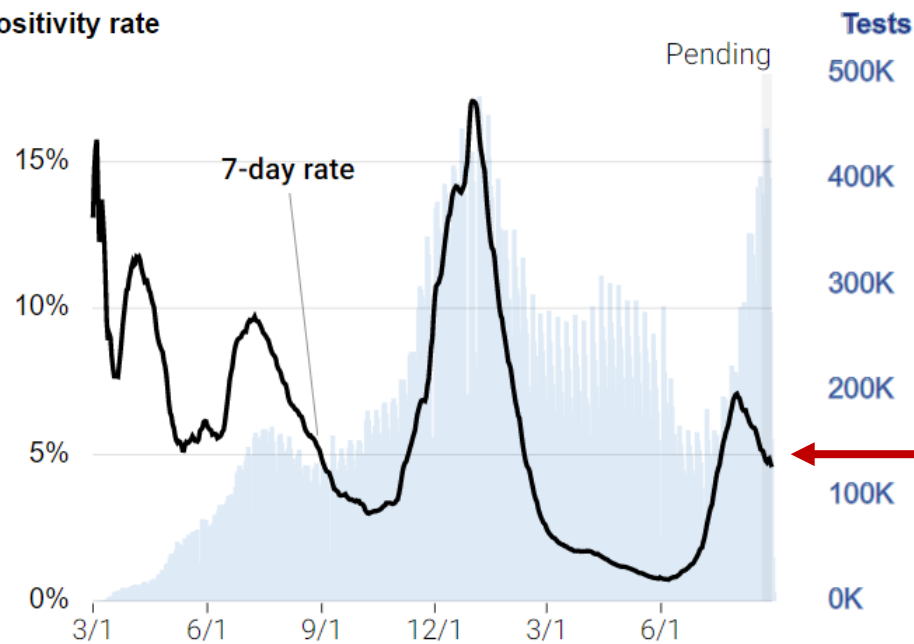
CA COVID-19 Numbers as of 8/31/21

The seven-day test **positivity rate** is **4.6%**, **down .5%** from 7 days prior

4.6% test positivity (7-day rate)

0.5% decrease from 7-days prior

Positivity rate



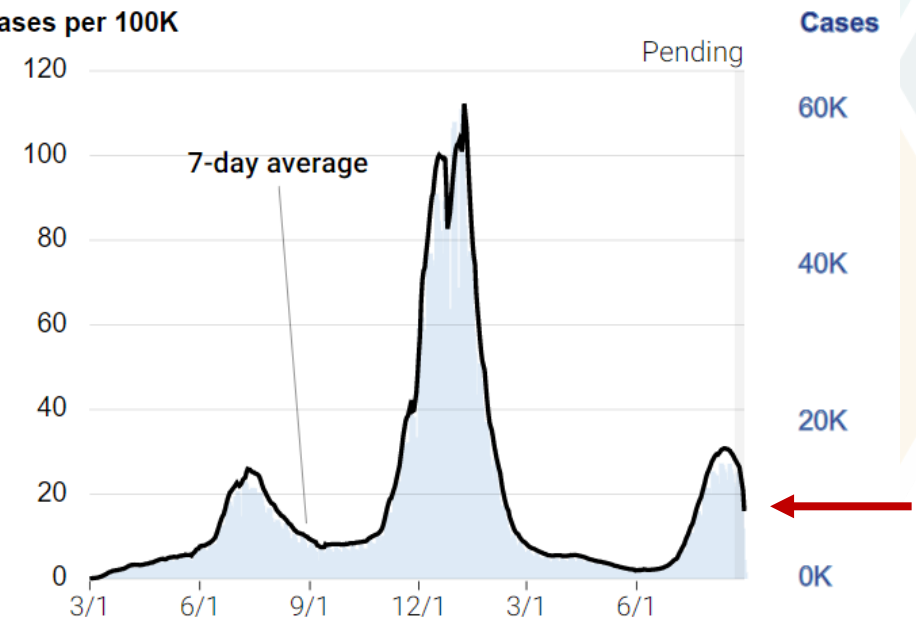
Confirmed new cases ratio is **27.9/100K** (7 day average) a **.2%** increase

4,222,663 total confirmed cases

9,606 new cases (**0.2%** increase)

27.9 cases per 100K (7-day average)

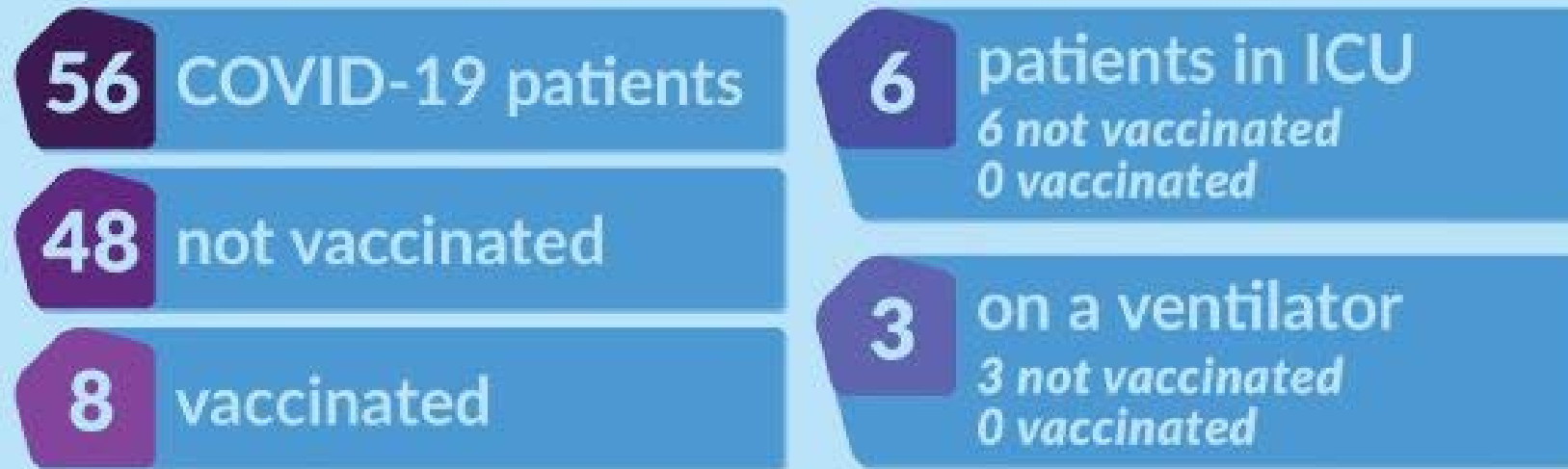
Cases per 100K



Delta Variant Impact on a Small Hospital

COVID-19 Update

As of **Aug. 27, 2021**, we are caring for:



A year ago, our weekly average was about 18 COVID patients.

CDC Study from LA County

A July 2021 study of Los Angeles, CA
public health records found...

Unvaccinated have

5X

more COVID-19 **infections**
than fully vaccinated

Unvaccinated have

29X

more COVID-19 **hospitalizations**
than fully vaccinated



322041 AC

Get vaccinated to reduce spread and protect yourself

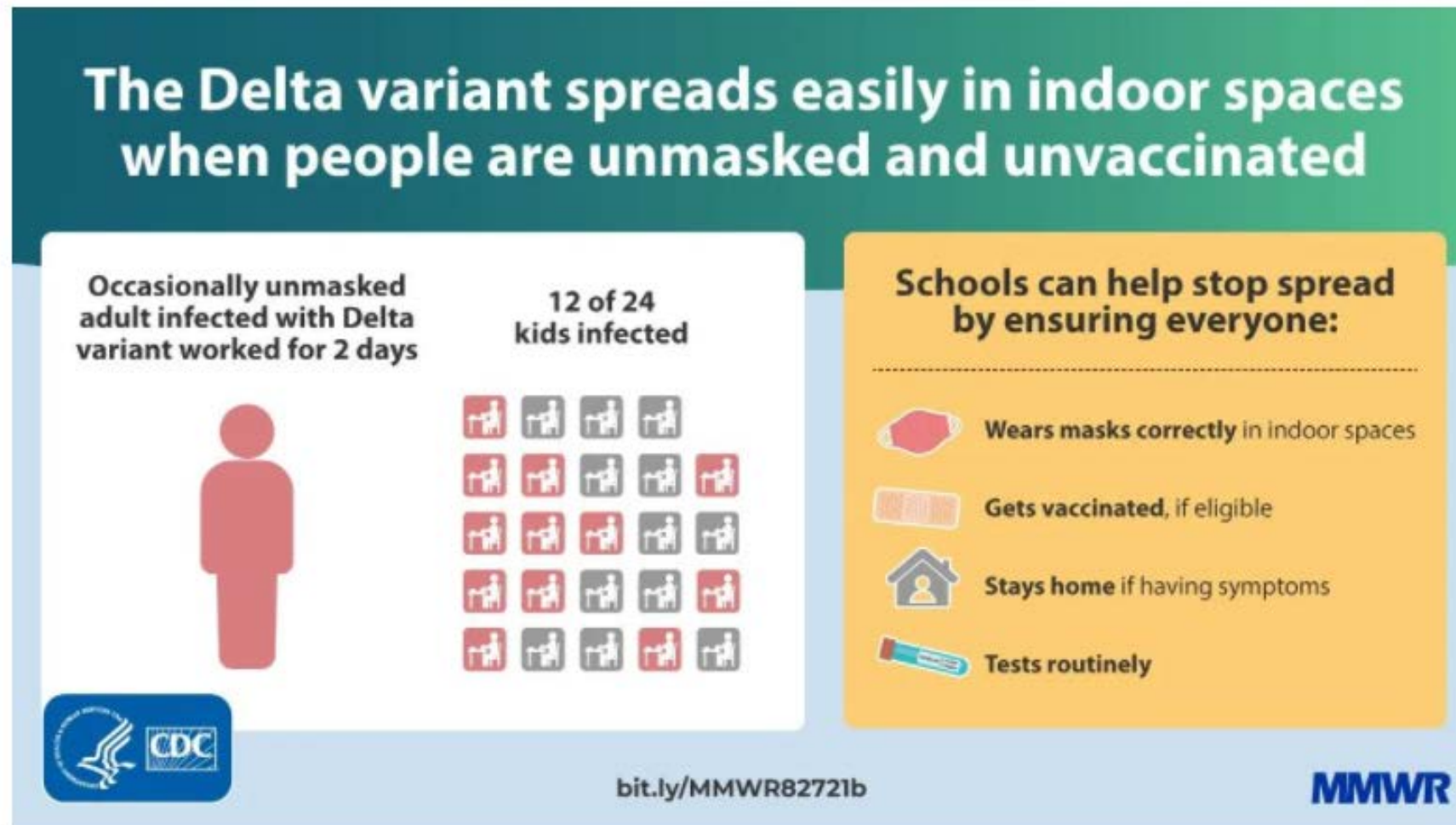
MMWR

CDC Study from LA County (con't)

- A new study released by the CDC shows that unvaccinated people are 29 times more likely to be hospitalized with COVID-19 than those who are vaccinated against the coronavirus
- The study also found that unvaccinated people are about five times more likely to be infected with COVID-19 than those who are not
- The study is based on data from people ages 16 and older in Los Angeles County between May 1 to July 25
- As of 8/30/2021 more than 201 million Americans have received at least one dose of COVID-19 vaccine with over 171 million fully vaccinated, according to data from the CDC

Griffin JB, Haddix M, Danza P, et al. SARS-CoV-2 Infections and Hospitalizations Among Persons Aged ≥ 16 Years, by Vaccination Status — Los Angeles County, California, May 1–July 25, 2021. MMWR Morb Mortal Wkly Rep 2021;70:1170–1176. DOI: <http://dx.doi.org/10.15585/mmwr.mm7034e5external icon>

CDC Case Study Report of Classroom Infection



CDC Case Study Report of Classroom Infection

6 foot distance between desks + air filter at front of room + door and windows open for ventilation. Students wearing masks; teacher removed hers to read aloud

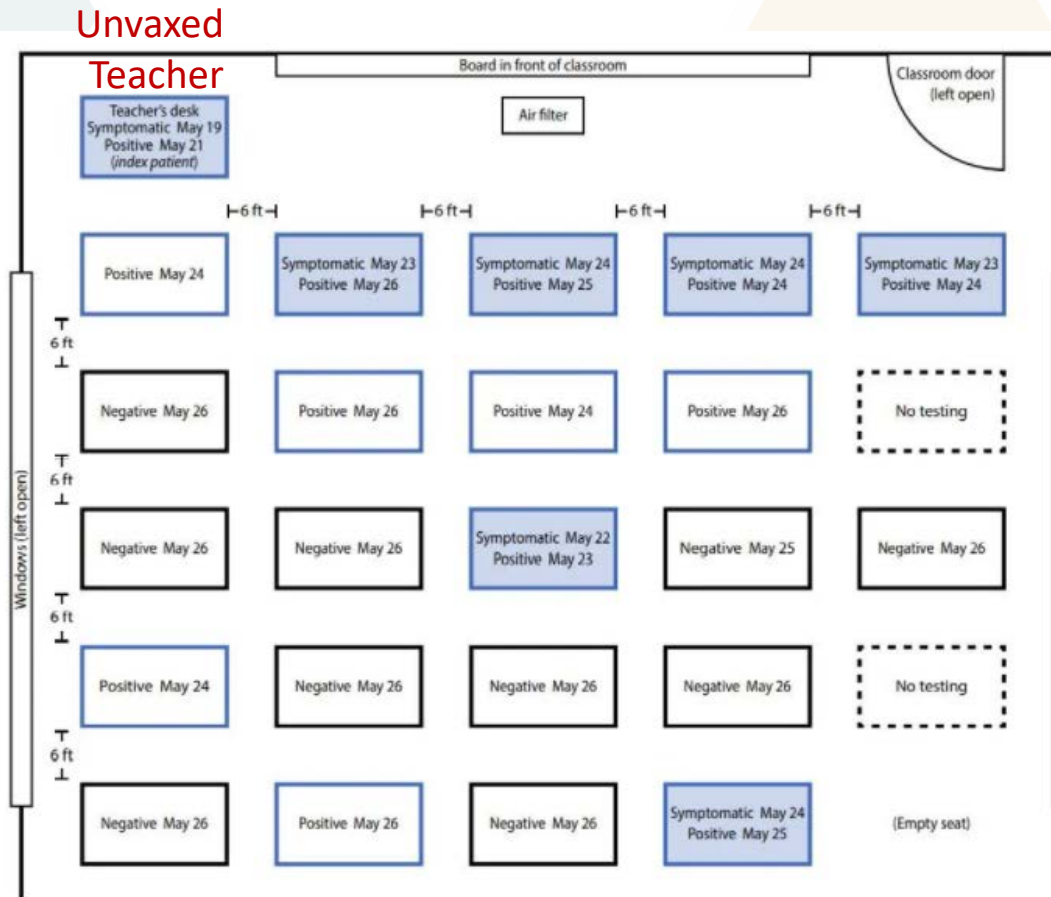


Figure via CDC

Marin County
High School Classroom

Shaded blue = symptomatic

Outlined blue = positive test

Dotted = no testing

Outlined black = negative test

CDC Study – Vaccine Protection

[Aug. 6 CDC Study: Vaccination Offers Higher Protection than Previous COVID-19 Infection | CDC Online Newsroom | CDC](#)

Major Takeaways from a study in Kentucky:

1. Unvaccinated individuals are more than twice as likely to be **reinfected** with COVID-19 than those who were fully vaccinated after initially contracting the virus.
2. COVID-19 vaccines offer better protection than natural immunity alone and that vaccines, even after prior infection, help prevent reinfections.

<https://www.cdc.gov/media/releases/2021/s0806-vaccination-protection.html>

Roles of an Additional Vaccine Dose

There are two distinct potential uses for an additional vaccine dose:

Additional dose after an initial primary vaccine series: administration of an additional vaccine does when the initial immune response following a primary vaccine series is likely to be insufficient**

Booster dose: a dose of vaccine administered when the initial sufficient immune response to a primary vaccine series is likely to have waned over time

****Additional dose has been approved by the CDC
only for immunocompromised people**

[Microsoft PowerPoint - 09 COVID Oliver Aug 30 2021 \(cdc.gov\)](#)

Additional Shot - Immunocompromised Individuals

- Immunocompromised individuals are eligible to receive an additional shot
- This shot is considered to be part of the primary series of shots. **It is not a booster shot.**
- MyTurn and retail pharmacy websites are now available for booking additional vaccine appointments for those who qualify as being immunocompromised. This relies on self-attestation.

[Coronavirus \(COVID-19\) Update: FDA Authorizes Additional Vaccine Dose for Certain Immunocompromised Individuals | FDA](#)

Flu Shot Recommendations

It is okay to take a flu vaccine at the same time or close to a COVID-19 vaccination, per CDC “What’s New for 2021-2022”

New study, published August 15, 2021 in *Clinical Infectious Diseases*:

- Maximum influenza vaccine efficacy in adults occurred shortly after vaccination, followed by an average decline of 8% to 9% each month and an even swifter drop among older adults (*10.8% in vaccine efficacy for each 30 days after inoculation*)
- Even a 1- or 2-month delay in annual flu vaccination could improve vaccine effectiveness by 10% to 20%
- Therefore, CDC recommends flu vaccination by the end of October (it takes 2 weeks to develop antibodies)

<https://www.cdc.gov/flu/season/faq-flu-season-2021-2022.htm>

Panel Discussion

The Changing Landscape

Submit questions or comments in the Question Box

If directed to a specific panelist, please indicate

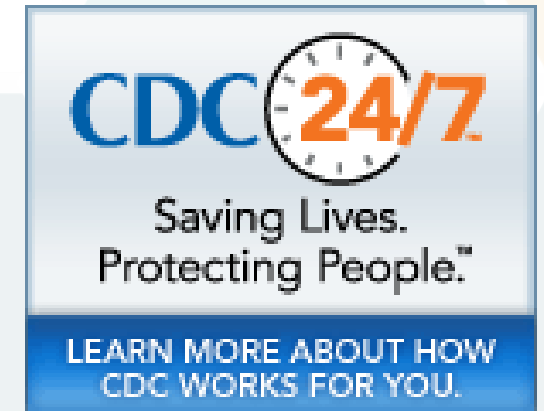
CDC Guidance

The CDC has updated COVID-19 guidance specific to Adult Day Services Centers (ADSCs) to reduce the spread of COVID-19 and maintain safe operations.

[COVID-19 Guidance for Adult Day Services Centers | cdc](#)

It provides guidance on promoting vaccination, wearing masks, physical distancing, ensuring indoor spaces are well-ventilated, and more.

If state or local guidance differs, always apply the strictest standard



Public Health Orders

July 26, 2021 Order - Unvaccinated Workers in High-risk Settings

Applies to all high-risk care settings including, but not limited to:

- Adult Day Health Care (ADHC)
- Adult Day Programs (ADPs)
- PACE

»» Full compliance deadline was **August 23, 2021**

August 5, 2021 Order - Healthcare Worker Vaccine Requirement

Applies to healthcare workers only (**does not apply to ADPs**)

- Adult Day Health Care
- PACE

»» Full compliance deadline is **Sept. 30, 2021**

- Exemptions only for medical or religious reasons

Both Public Health Orders are in Effect

The testing order applies to both ADPs and ADHCS

- The July 26 testing order and the August 5 order are in effect now and extend beyond the September 30 deadline for healthcare workers to be vaccinated.
 - Workers granted exemption to the vaccination mandate shall undergo on-site antigen or PCR testing a minimum of 1 time per week.
 - Strong recommendation is 2 times per week.
- **The vaccination mandate applies only to healthcare workers, so ADHCs are included, but not ADPs**

Weekly Testing Requirement- Applies to ADPs and ADHCs

1. All unvaccinated or symptomatic workers must undergo testing (either antigen or PCR at least once per week)
 - Unvaccinated includes those who have not completed the full course of shots (2 for Pfizer & Moderna; 1 for J&J)
 - “Worker” is broadly defined, employees, contractors, volunteers, etc.
2. You must maintain a record of both vaccination status and testing results of all workers
3. **There are NO exemptions to testing**



Staff Testing Options

1. Statewide BinaxNOW™ Testing Program
2. County Public Health
3. “Free” county testing sites or walk-up clinics

Implementing the Testing Mandate

COVID-19 test kit procurement

- There is a temporary national shortage of BinaxNOW test kits
- Until supplies increase, use FDA approved antigen rapid tests or PCR test sites
- See FDA approved list for other antigen tests <https://www.fda.gov/medical-devices/coronavirus-disease-2019-covid-19-emergency-use-authorizations-medical-devices/in-vitro-diagnostics-euas-antigen-diagnostic-tests-sars-cov-2>
- CalOES may be able to supply alternative test kits by request (be specific) or you may reach out to your local MHOAC (Medical Health Operational Area Coordination) Program. See link below for a pdf list
<https://emsa.ca.gov/medical-health-operational-area-coordinator/>

On-site Testing Considerations

- Staffing/Training testing operation
 - Registration, Supervision, Running Tests, Reading/Logging Results
- Maintaining safety while testing
 - Testing prior to entering workspace
 - Using outdoor spaces when appropriate for collection
 - Staggering staff arrival to accommodate testing schedule

Center Landscape Today

Lena Haroutunian, MSW, Program Director, New Sunrise ADHC, Northridge

Richard Lee, Program Director, Beverly ADHC, Los Angeles

Lois Sones, LCSW, Elderday, Santa Cruz

Stephanie Wilson, Program Director, Triple R Adult Day Program, Sacramento

Question #1

With the highly contagious Delta variant still circulating what changes have you made to your program to adapt to the evolving situation on the ground?

Question #2


How are you now thinking about advancing the goal of an eventual safe and orderly return to congregate services?

Question #3

What are you doing to prepare your team for the Sept 30 Public Health Order Vaccination Mandate deadline?

Question #4

What impact, if any, do you expect the Public Health mandating vaccination for all healthcare workers will have on staff schedules, services and operations?



What are some best practices you have adopted for providing person-centered remote services?

Best Practices for Remote Services

Instead of this...	Do this
Dropping off meals unattended in a lobby	<ul style="list-style-type: none">• Have a care plan addressing nutritional needs and services• Deliver/arrange meals based on safe practices, needs, and individual preferences• Use the opportunity to provide door-step check/evaluation/monitoring by center staff• Document outcomes of meal service portion of nutritional services

Best Practices for Remote Services

Instead of this...	Do this
Providing routine calls to a participant that is admitted to Skilled Nursing Facility	<ul style="list-style-type: none">• Document ongoing needs of participant with significant health/status changes.• Provide and document specific services provided while participant is admitted to SNF to support transition to home (if that is the goal) plus expected and actual outcomes• Not provide duplicate/unnecessary services that are provided by the NF or elsewhere

Best Practices for Remote Services

Instead of this...	Do this
Conducting all services remotely	<ul style="list-style-type: none">• Develop and enforce a plan for prevention/mitigation to allow for safe delivery of in-person services• Progress to a gradual and safe return to in-center services, starting with individual services• Conduct assessments, evaluations, and provide services remotely, as needed, keeping foremost preferences on in-person delivery

PPE Options

1. Retail suppliers

- PPE must be FDA approved <https://bit.ly/3BtpJqF>
- Curated supplies also can be located here: <https://www.projectn95.org/>

2. CalOES (send order to CDA by the 10th of each month)

3. Adult Day Programs - check with your Regional Center and your regional Community Care Licensing Field Office for drive through events

State's BinaxNOW™ Testing Program

CDPH BinaxNOW™ Antigen Testing Program for COVID-19:

- Available to ADPs and ADHCs
- Facilities may directly apply to the BinaxNOW™ Antigen Testing Program through its [application webpage](#).

For questions, support, or more information about enrolling in the CDPH's Testing Program, please contact the CDPH at RCFEbinax@cdph.ca.gov

Antigen Testing Resources & Training

[California Coronavirus Testing Task Force](#) | California is expanding coronavirus testing capacity

CDPH Adult and Senior Care Antigen Testing Program email: rcfebinax@cdph.ca.gov

CDPH Testing Task Force email: Testing.Taskforce@cdph.ca.gov

Weekly FAQ sessions every Thursday at 1 pm. Please join via this zoom link:

<https://cdph-ca-gov.zoom.us/j/85118149890?pwd=R3c3ZDVzUTZpajBFR3NUZStaeERaZz09>

Meeting ID: 851 1814 9890 Passcode: 631140

Training Links:

Tuesday, Thursday, and Friday at 11 am:

<https://cdph-ca-gov.zoom.us/meeting/register/tZMkcuCrrT0oGtFSv5OayM5cm-Pb79y-bSJW>

Monday, Tuesday, and Thursday at 2 pm:

<https://cdph-ca-gov.zoom.us/meeting/register/tZwpc-qgrDsuHdV37192YSc-H8tWvdx8t7-R>

Spanish Trainings on Wednesday at 2 pm:

<https://cdph-ca-gov.zoom.us/meeting/register/tZEvdGgppjlrG9GIHUAh6CIKC3DGBtnH3mVH>

Wednesday & Thursday at 6 pm:

<https://cdph-ca-gov.zoom.us/meeting/register/tZwpcuqrrzltE9zmutDMeELGklc6XcHvPFUS>

Recent Public Health Orders Related to COVID-19

- [June 11, 2021](#) Public Health Order Beyond Blueprint
- [July 26, 2021](#) Healthcare Worker Protections in High-Risk Settings
- [Aug 5, 2021](#) Healthcare Worker Vaccine Requirement
- [Aug 7, 2021](#) Q&A Healthcare Worker Vaccine Requirement
- [Aug 9, 2021](#) Q&A Healthcare Worker Protections in High-Risk Settings
- [Aug 20, 2020](#) Q&A Healthcare Worker Vaccine Requirement

CDA CBAS Guidance Related to COVID-19

- [ACL 21-04](#) Transition to Congregate Services (April 8, 2021)
- [ACL 21-05](#) Frequently Asked Questions (FAQ) #7, CBAS Phased Transition to Congregate Services (May 24, 2021)
- [ACL 21-06](#) Temporary Suspension of PCR Submission to CDA for June 2021 (June 2, 2021)
- [ACL 21-08](#) (Revised) Notice of CDPH Public Health Order “Unvaccinated Workers in High-Risk Settings” (Aug 10, 2021)
- [ACL 21-09](#) Notice of CDPH Public Health Order of August 2, 2021 – “Healthcare Worker Vaccine Requirement” (Aug 13, 2021)
- [ACL 21-10](#) Postponement of Deadline for CBAS Transition of All Participants to In-Center Services and Other Planning Updates (Aug 31, 2021)

CDPH ADHC Guidance Related to COVID-19

CDPH All Facility Letters

- [AFL 21-15](#) Request for 30-day Sustainment Supply of the State's Personal Protective Equipment (PPE) Inventory (May 13, 2021)
- [AFL 21-29](#) Testing, Vaccination Verification and PPE at Healthcare Facilities (Aug 3, 2021)
- [AFL 21-33](#) Facility Emergency Contact and All Facilities Letter Recipient Information (Aug 24, 20121)

Adult Day Program Guidance Related to COVID-19

CA Dept of Social Services PINs

- [21-30-ASC](#) CDPH BINAXNOW™ Antigen Testing Program for COVID-19
- [21-33 ASC](#) ADP Covid-19 Guidelines
- [21-34-ASC](#) Update to Facility COVID-19 Status Survey sent via Everbridge
- [21-35-ASC](#) Delay of Compliance and Regulatory Enforcement (CARE) Tool
- [21-39-ASC](#) Governor's Executive Order N-12-21 Regarding Coronavirus Disease 2019 (Covid-19) And The Expiration Of Covid-19 Waivers

PPE and Testing Resources

1. PPE Unite <https://www.ppeunite.org/>
2. Project 95: <https://www.projectn95.org/>
3. CalOES PPE Order Form (for CBAS centers apply through CDA)
<https://aging.ca.gov/download.ashx?IE0rcNUV0zYfJu14n9VN1Q%3D%3D>
4. PPE from CDSS CCL (Contact your licensing Field Office)
5. Searchable Testing sites on COVID-19 ca.gov website
<https://www.arcgis.com/apps/Nearby/index.html?appid=43118dcod5d348d8ab20a81967a15401>

Upcoming ALE webtalks & other trainings

- Sept 8 CAADS Webinar: 10:30am | *Developing Activities That Have Meaning for People Living with Dementia*
- Sept 15 **Webtalk:** Using Motivational Interviewing to Talk about Vaccines
- Sept 16** Save the date: CAADS Webinar with Labor Law expert Jennifer Shaw on the Aug. 5 Public Health Order Mandating Vaccinations
- Oct 6 **Webtalk:** Dr. Tina Sadarangani - Assistant Professor NYU College of Nursing to discuss early findings from her NIH funded research to examine outcomes for people with dementia served in CA ADHCs

** Note: Sept 15 is the last in the series of Archstone Foundation supported “free” webinars that are open to all CAADS non-members*

CAADS Membership

- **The best time to join CAADS is Anytime! But NOW is ideal** because annual conference is just around the corner and discounted member rates are available.
- New member-only benefits are in the works – including “Office Hours” and “Lunch and Learn” options to support you as you get back to congregating and learning how to navigate CalAIM opportunities for additional reimbursement.
- Join the vibrant and growing CAADS community by going to the CAADS website <https://caads.org/> or email Danielle@caads.org who will happily answer all your questions and get you started as a CAADS member.

Thought for the Week

